

FLAT 4, EASTWELL

STRATFORD-UPON-AVON



WE ARE



Heart of England Mencap is a registered charity supporting people with learning disabilities across Warwickshire and Worcestershire.

We are a social business with a charitable purpose, delivering a wide range of support, enabling individuals to live independently within their own home or with support that is tailored to meet their needs.

We find the appropriate ways to support people to live the life they choose and focusing on what an individual can do rather than their disability.



passionate about supporting people with learning disabilities to lead fulfilled lives!



We encourage purposeful days leading to meaningful and memorable lives for customers and those who love them.

We identify and measure outcomes and all customers have a person-centred plan agreed with them and family members or other care professionals as appropriate, reviewed and revised at least annually or sooner

As with all of our services, we are supported by highly-trained and dedicated staff.

**HELENA WALLIS
CEO**

OUR VALUES



Honest



Effective



Aspirational



Respectful



Trustworthy

LIVING INDEPENDENTLY

We ensure safety and security, with care from our highly qualified staff.

We provide supported living, individually tailored to suit abilities, that builds independent living skills to promote:



Healthy Eating



Personal Hygiene



Clean Home



Managing Money



Doing Shopping

We also support companionship with a wide-ranging social life too!

“ *the right support, in the right place, at the right time* ”



FLAT 4, EASTWELL, STRATFORD-UPON- AVON



We believe that everyone, regardless of need, should be given the opportunity to realise their aspirations and having a high-quality, safe and secure home is a big part of this.



A fantastic opportunity to join our Stratford-upon-Avon supported living service in a private two-bedroom flat.



The property includes:

- 1 large double bedroom
- 1 single bedroom
- Large wetroom
- Open plan living and dining room
- Newly fitted kitchen
- Generous storage
- Communal garden
- Staff on site at all times



The right person:

- Wants to live in Stratford-upon-Avon
- Over 70 hours of support needs per week
- Compatible with others who live in the building

'JUST' ENOUGH SUPPORT TO LIVE INDEPENDENTLY

FLAT 4, EASTWELL, STRATFORD-UPON- AVON

The building.



A large communal garden with open green space, picnic seating, vegetable patches and bike storage. The garden backs onto the Stratford-upon-Avon tramway for walks and easy access to the town centre.

Those who live at this property have built a community with each other, sharing in gardening activities and occasional communal meals.

JOIN THE EASTWELL COMMUNITY

FLAT 4, EASTWELL, STRATFORD-UPON- AVON



The property.



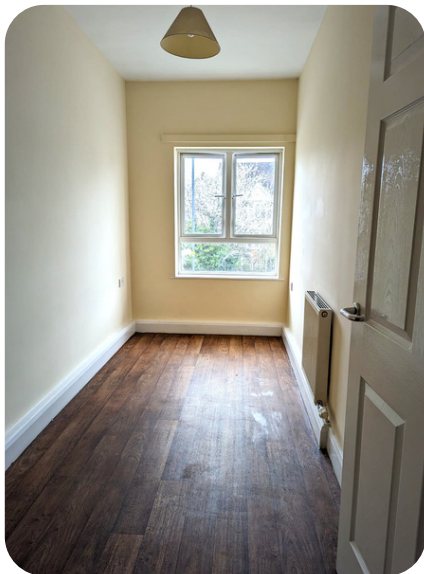
The property has a large open plan living and dining room, which leads through to the kitchen. It has been recently decorated and new kitchen appliances fitted.

This property is part-furnished as need.

MAKE IT HOME

FLAT 4, EASTWELL, STRATFORD-UPON- AVON

The property.



A two bed apartment with a large double and a single bedroom. The perfect space to make your own.

A well-equipped wet room. Including handle support, shower seating, and space for personal care needs to be met if required.

MAKE IT HOME

NEXT STEPS



TALK TO US

If you'd like to find out more about how to take the next steps in accessing support for a loved one, please drop us a line on 01789 298709 or support@heartofenglandmencap.org.uk

FIND OUT MORE



[/heartofenglandmencap](#)



[@heartofenglandmencap](#)



[/HofEMencap](#)



[/HeartofEnglandMencap](#)





JOIN US



Heart of
England

5 Church Green
Atherstone on Stour
Stratford Upon Avon
CV37 8NE

01789 298709

www.heartofenglandmencap.org.uk